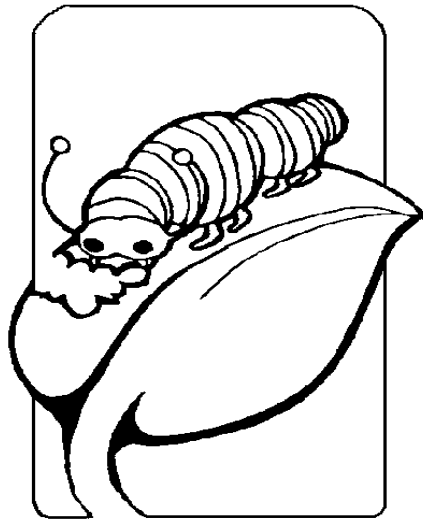


About this Garden



Color Me!

At Pemaquid Beach Park there are many things to see beyond the really neat sandy beach. The Pemaquid Watershed Association ("PWA"), a local group that takes care of the environment, teamed up with the Bristol Parks Commission to make "Beachcombers' Rest". This is a nature center that has exhibits and events to teach about the ecology of the beach. The PWA and the Parks Commission also teamed up to make this Butterfly Garden. This butterfly garden will help show people the beauty in nature and the role butterflies play in our world.

About this Brochure

This brochure originally was designed by three seniors at Lincoln Academy in Newcastle, Maine, to fulfill their Service Learning Project requirement for graduation. These high school students worked with the Pemaquid Watershed Association to create this kid-friendly brochure for visitors to the Butterfly Garden at Pemaquid Beach Park.

Start-up plantings provided courtesy of
COTTAGE GARDEN CENTER
Damariscotta

The Pemaquid Watershed Association is a 501(c)(3) charitable nonprofit organization dedicated to conserving the natural resources of the Pemaquid Peninsula of Maine through land and water stewardship and education.

Est. 1966

☞ Member Supported ☞

☞ Volunteer Driven ☞



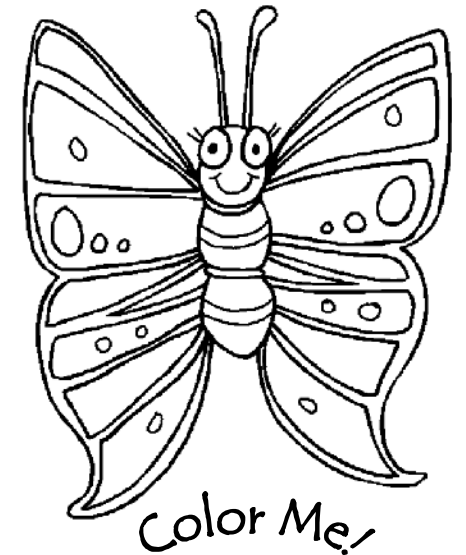
Pemaquid Watershed Association

P.O. Box 552
15 Courtyard Street
Damariscotta, ME 04543
Phone: (207) 563-2196
Fax: (207) 563-2192

Email: info@pemaquidwatershed.org
Web Site: www.pemaquidwatershed.org

BUTTERFLY GARDEN

Pemaquid Beach Park, Maine



A Collaboration between:



Pemaquid Watershed Association

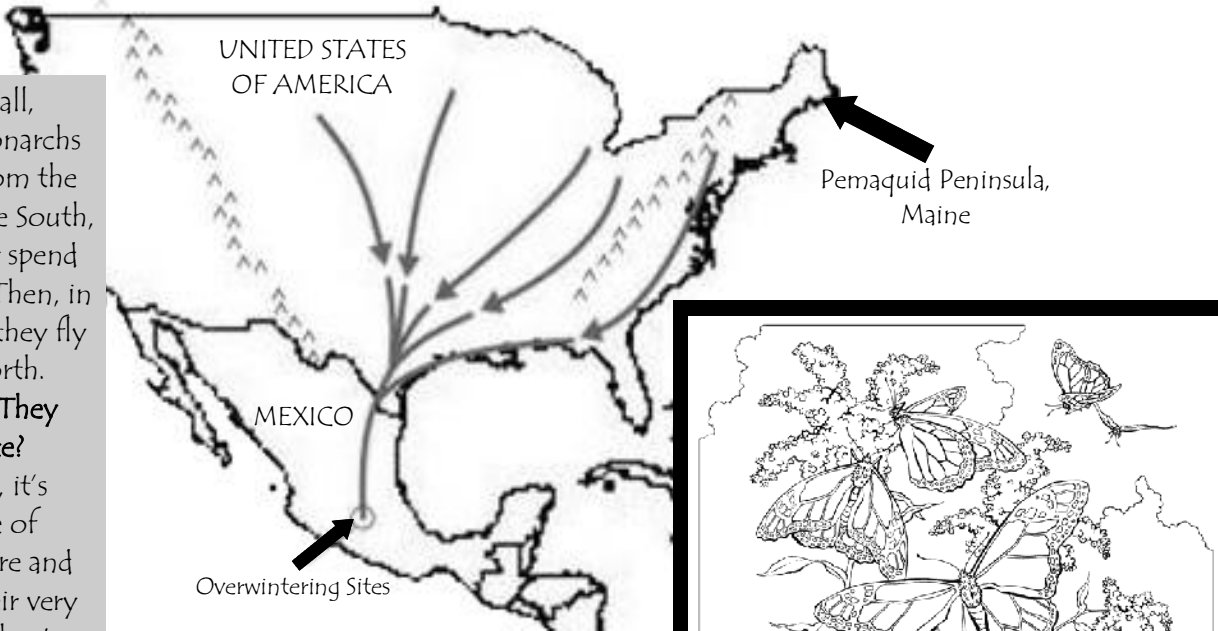
Conserving the natural resources of the Pemaquid Peninsula of Maine.
Est. 1966



Butterflies at Pemaquid Beach Park

Did you know that the Pemaquid Peninsula of Maine is an important breeding and resting stop for Monarch Butterflies? They stop on their migration North to breed, and they stop on their migration South to regain their strength so they can continue on to Mexico.

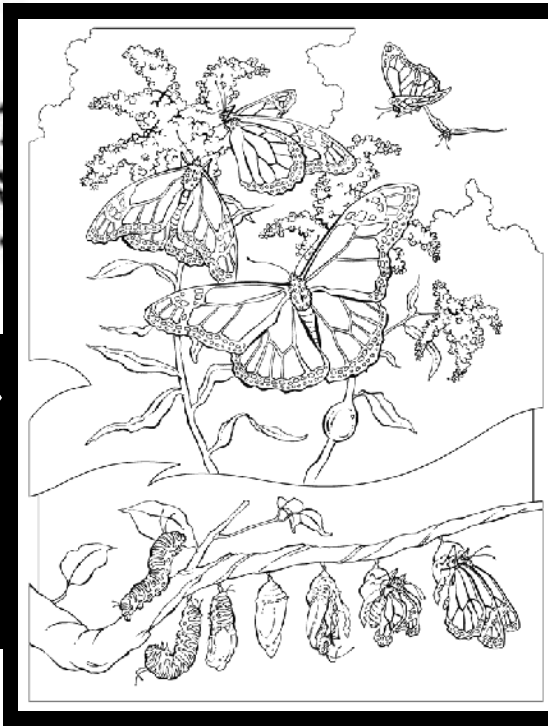
Every Fall, Eastern Monarchs migrate from the North to the South, where they spend the winter. Then, in the spring, they fly back North. Why Do They Migrate? Basically, it's because of temperature and finding their very specific "host plant", Milkweed.



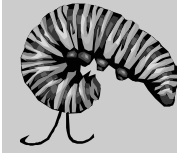
A Monarch Butterfly can fly up to 4,000 miles each year for a round-trip migration!

Color a Monarch

A Monarch's wings have a black outline on the edge and black spots surrounded by a yellowish-orange color. Their antennae have a bright yellow dot.



Butterfly Garden Plants



"Host Plants" provide sites for butterflies to lay eggs & are sources of food for caterpillars.

Some host plants are Dill, Milkweed, and Wild Cherry.



"Nectar-producing Plants" provide food for adult butterflies.

Two nectar-producing plants are Butterfly Bush and Marigolds.

Some butterflies that visit these plants include Monarchs, Aphrodite Fritillary, & Red Admirals, like this one.

Photo by Mark Ward



Butterfly Houses

One thing you can do in your own butterfly garden is to make your own butterfly house where the butterflies can visit.

Another thing you can do is put out butterfly feeders. They are like hummingbird feeders only you fill them with nectar.

Learn how to build a butterfly house on the Web at: <http://home.howstuffworks.com/butterfly-crafts2.htm>

Can you match the butterflies?

